

5,964



New Jobs-City
YOY growth, May 2014

11 pp



Bus. Barometer-MSA
YOY Growth, Jun 2014

120.7%



Bldg Permits-City YOY
growth, May 2014 YTD

48.34



Visitors (millions)-City
2013

Employment

YOY job growth by industry, City, May-2014

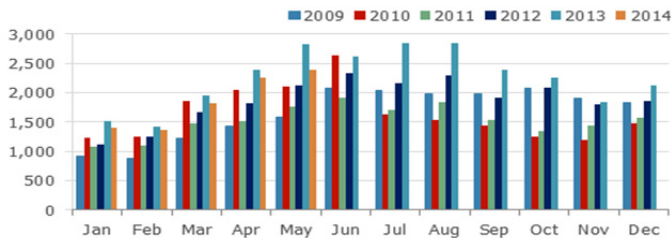
Education & Health	2.7%	6,082
Professional & Bus. Services	1.1%	3,094
Transportation & Utilities	2.0%	1,368
Wholesale	1.6%	712
Construction	2.1%	556
Natural Resources & Mining	-14.1%	-39
Retail	-0.2%	-148
Other Services	-0.4%	-277
Information	-1.1%	-368
Government	-0.2%	-402
Leisure & Hospitality	-0.7%	-958
Manufacturing	-1.9%	-1,236
Financial Activities	-2.2%	-2,822

Unemployment rate, select cities, May-2014

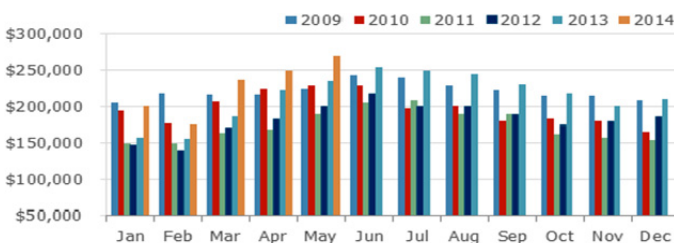
Los Angeles	8.8%
Chicago	8.4%
New York	7.7%
Houston	5.1%

Real Estate

Monthly home sales, City, May-2014



Median home sale price, City, May-2014

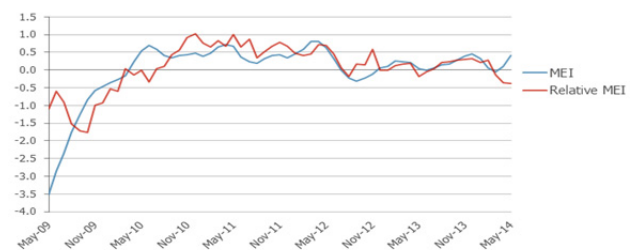


Business Activity

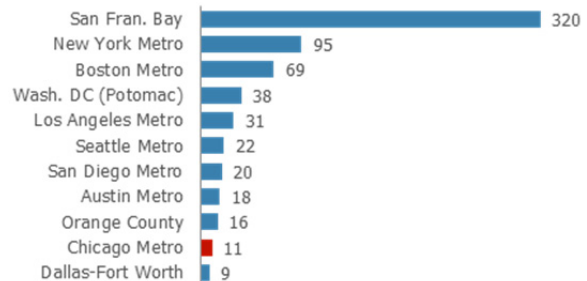
Chicago Business Barometer, Jun-2014



Midwest Economy Index, May-2014

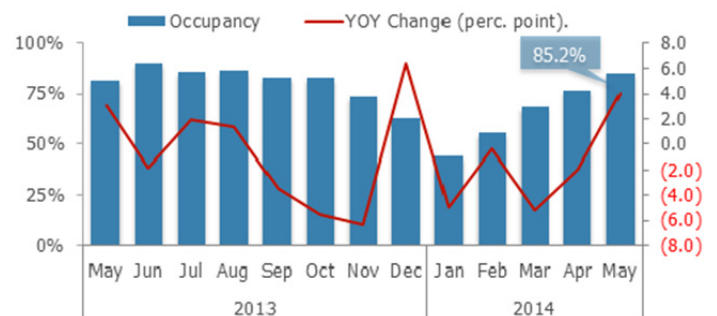


Venture capital rounds, select metros, Q1 2014



Tourism

Hotel Occupancy, City, May-2014





Chicago by the Numbers Revised 7/1/2014

Indicator	Date	Month/Quarter		
		Most Recent	Year Earlier	Yr-On-Yr Chg
Employed residents (1,000)-City	May-14	1,153.3	1,144.0	0.8%
Employed residents (1,000)-MSA	May-14	4,511.5	4,463.2	1.1%
Labor force (1,000)-City	May-14	1,259.0	1,279.8	-1.6%
Labor force (1,000)-MSA	May-14	4,859.8	4,906.4	-1.0%
Unemployment rate-City	May-14	8.4	10.6	-2.2
Unemployment rate-MSA	May-14	7.2	9.0	-1.9
Labor force participation rate-statewide	May-14	65.1	65.5	-0.4
Total private payroll jobs (1,000)-City	May-14	1,173.6	1,167.6	0.5%
<i>Natural Resources & Mining</i>	May-14	0.2	0.3	-14.1%
<i>Construction</i>	May-14	26.6	26.1	2.1%
<i>Manufacturing</i>	May-14	63.2	64.4	-1.9%
<i>Wholesale trade</i>	May-14	46.0	45.3	1.6%
<i>Retail Trade</i>	May-14	97.1	97.3	-0.2%
<i>Transportation, Warehousing, & Utilities</i>	May-14	70.8	69.5	2.0%
<i>Information</i>	May-14	33.4	33.7	-1.1%
<i>Financial Activities</i>	May-14	126.1	128.9	-2.2%
<i>Professional & Business Services</i>	May-14	276.8	273.7	1.1%
<i>Educational & Health Services</i>	May-14	234.1	228.0	2.7%
<i>Leisure & Hospitality</i>	May-14	132.9	133.8	-0.7%
<i>Other Services</i>	May-14	66.3	66.6	-0.4%
<i>Government</i>	May-14	176.2	176.6	-0.2%
Unemployment insurance claims-Cook County	May-14	16,779	19,500	-14.0%
New hires (1,000)-Midwest	Apr-14	1,087	969	12.2%
Online job postings-MSA	Q1-2014	272,720*	N/A*	N/A*
Leading Economic Index (2004=100)-Nt'l	May-14	101.7	95.2	6.5
Consumer Sentiment Index-Nt'l	Jun-14	82.5	84.1	-1.6
Consumer Confidence (1985=100)-Nt'l	Jun-14	85.2	82.1	3.1
Architecture Billings Index-Nt'l	May-14	52.6	53.2	-0.6
Producer Price Index (1982=100, seas. adjusted)-Nt'l	May-14	200.7	195.9	4.8
New automobile sales (millions, seas. adjusted)-Nt'l	May-14	5.6	5.3	4.8%
New truck sales (millions, seas. adjusted)-Nt'l	May-14	7.5	6.8	11.0%
Freight Transportation Services Index (2000=100)-Nt'l	Apr-14	117.6	112.2	5.4
Midwest Economy Index-Midwest	May-14	0.41	0.04	0.37
Exports (\$B)-State of Illinois	Apr-14 YTD	22.8	20.9	9.1%
GRP (est., 2014 \$B)-MSA	Q1-2014	553.4	541.9	2.1%

EMPLOYMENT

BUSINESS ACTIVITY

Green = Improving; Red = Worsening

(cont.)



Chicago by the Numbers Revised 7/1/2014

	Indicator	Date	Month/Quarter		
			Most Recent	Year Earlier	Yr-On-Yr Chg
BUSINESS ACTIVITY	Chicago Business Barometer (seas. adjusted)-MSA	Jun-14	62.6	51.6	11.0
	Consumer Price Index (CPI-U; 1982-84=100)-CMSA	May-14	229.6	225.6	4.0
	Air cargo tonnage-ORD+MDW	May-14	131,765	120,337	9.5%
	Venture capital rounds-MSA	Q1 2014	11.0	11.0	0.0%
	Venture capital investment (\$M)-MSA	Q1 2014	131.3	34.8	276.9%
	Major business expansions-City	Q1 2014	44	29	51.7%
	Major business expansions-MSA	Q1 2014	89	80	11.3%
	Digital startups launched-MSA	Q1 2014	42	22	90.9%
	Digital startup funding (\$M)-MSA	Q1 2014	157	61	157.4%
	Active manufacturing licenses-City	Jun-14	1,056	959	10.1%
REAL ESTATE	Population (millions)-City	Jul-13	2.719	2.713	0.2%
	Population (millions)-MSA	Jul-13	9.537	9.514	0.2%
	Cost of Living Index-City	Q1 2014	117.5	114.8	2.7
	Case Shiller Home Price Index-MSA	Apr-14	126.0	113.8	12.2
	New private residential building permits (units)-City	May-14 YTD	2,624	1,189	120.7%
	New private residential building permits (units)-MSA	May-14 YTD	6,043	4,208	43.6%
	Housing starts (1,000)-Midwest	May-14	172	135	27.4%
	Home sales-City	May-14	2,390	2,834	-15.7%
	Median home sale price (\$)-City	May-14	270,000	235,000	14.9%
	Office vacancy rate-downtown	Q1 2014	13.7	13.9	-0.2
Office vacancy rate-suburbs	Q1 2014	19.8	20.8	-1.0	
TOURISM	Annual visitors (millions)-City	2013	48.34	46.37	4.2%
	Hotel occupancy rate-City	May-14	85.2	81.2	4.0
	Hotel average daily rate (\$)-City	May-14	227.59	212.82	6.9%
	Air passengers (millions)-ORD+MDW	May-14	8.18	7.84	4.4%

Green = Improving; Red = Worsening

Footnotes and Sourcing

*Data provider is continually expanding its data collection, so total growth in total ad volume over time cannot be attributed entirely to an increase in labor demand

Data is current as of 07/01/2014; preliminary estimates are subject to revision. Data is not adjusted for seasonality unless noted. The Chicago MSA (metropolitan statistical area) consists of a 14-county, tri-state region: Cook, DeKalb, DuPage, Grundy, Kane, Kendall, Lake, McHenry, and Will counties in Illinois; Jasper, Lake, Newton, and Porter counties in Indiana; and Kenosha County in Wisconsin. Midwest data reflects totals for Illinois, Indiana, Iowa, Kansas, Michigan, Minnesota, Missouri, Nebraska, North Dakota, Ohio, South Dakota, and Wisconsin. The Freight Transportation Services Index is a measure of the month-to-month changes in the output of for-hire freight transportation service providers including trucking, rail, inland waterway vessels, pipeline, and air freighters; the index does not include international or coastal movements, private trucking, courier services, or the U.S. Postal Service. State of Illinois exports are measured by the U.S. Census HS origin of production state-based series. Venture capital refers to cash investments by corporations and individuals into companies that have received at least one round of venture funding. **Sources (in order of appearance):** Illinois Department of Employment Security, U.S. Bureau of Labor Statistics, Burning Glass data generously provided by the Chicago-Cook Workforce Partnership, The Conference Board, Thomson Reuters/University of Michigan, American Institute of Architects, U.S. Bureau of Economic Analysis, U.S. Bureau of Transportation Statistics, Federal Reserve Bank of Chicago, USA Trade Online, Moody's Analytics, Institute for Supply Management, Chicago Department of Aviation, DJX VentureSource, World Business Chicago, Built in Chicago, City of Chicago, U.S. Census Bureau, Council for Community and Economic Research, S&P Dow Jones, Illinois Association of Realtors, CBRE, Smith Travel Research data generously provided by Choose Chicago