


Chicago by the Numbers Revised 5/5/2014

7,555 
New Jobs-City
YOY growth, Mar 2014

28.6% 
Bus. Barometer-MSA
YOY Growth, Apr 2014

26.7% 
Home Sale Price-City
YOY growth, Mar 2014

4.7% 
Air passengers-City
YOY growth, Mar 2014

Employment

YOY job growth by industry, City, Mar-2014

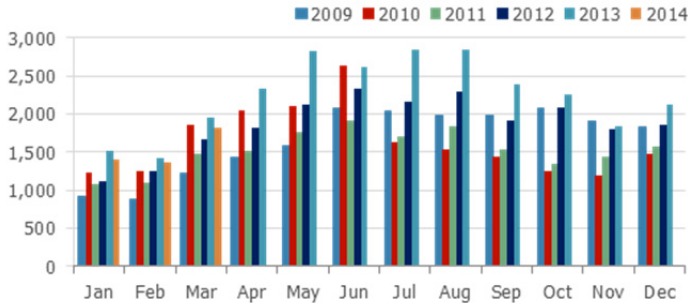
| | | |
|------------------------------|-------|--------|
| Education & Health | 2.7% | 6,232 |
| Professional & Bus. Services | 1.4% | 3,635 |
| Transportation & Utilities | 2.0% | 1,396 |
| Other Services | 0.7% | 474 |
| Wholesale | 0.5% | 239 |
| Information | 0.6% | 208 |
| Construction | 0.8% | 201 |
| Natural Resources & Mining | 0.0% | 2 |
| Government | 0.0% | -1 |
| Retail | -0.1% | -126 |
| Leisure & Hospitality | -0.8% | -1,052 |
| Manufacturing | -2.2% | -1,418 |
| Financial Activities | -1.8% | -2,230 |

Unemployment rate, select cities, Mar-2014

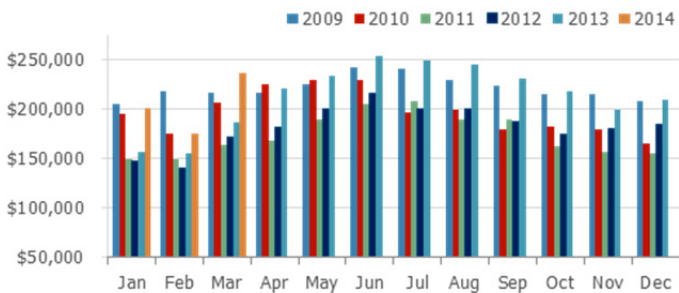
| | |
|-------------|------|
| Los Angeles | 9.7% |
| Chicago | 9.0% |
| New York | 8.3% |
| Houston | 5.2% |

Real Estate

Monthly home sales, City, Mar-2014

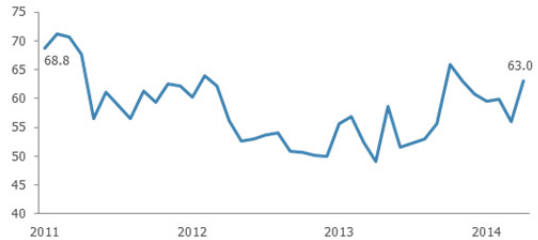


Median home sale price, City, Mar-2014

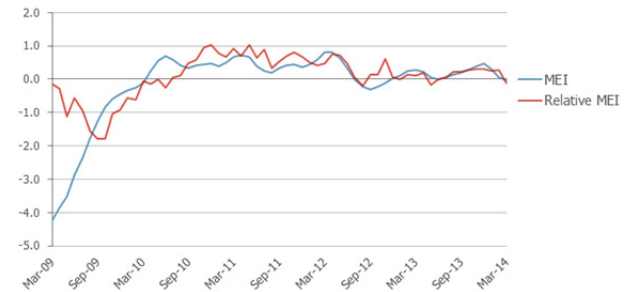


Business Activity

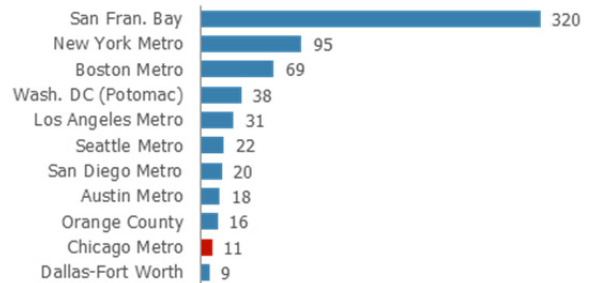
Chicago Business Barometer, Apr-2014



Midwest Economy Index, Apr-2014

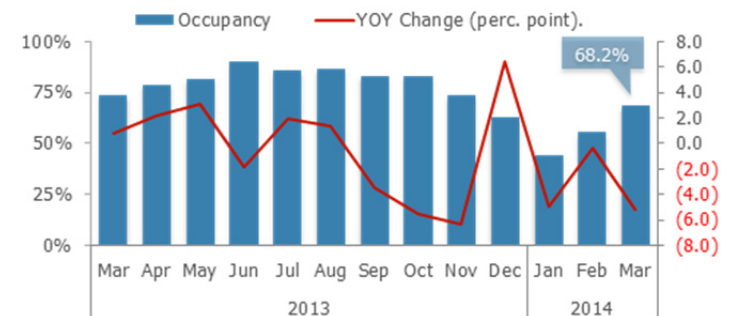


Venture capital rounds, select metros, Q1 2014



Tourism

Hotel Occupancy, City, Mar-2014





Chicago by the Numbers Revised 5/5/2014

| Indicator | Date | Month/Quarter | | |
|--|------------|---------------|--------------|--------------|
| | | Most Recent | Year Earlier | Yr-On-Yr Chg |
| Employed residents (1,000)-City | Mar-14 | 1,155.8 | 1,135.8 | 1.8% |
| Employed residents (1,000)-MSA | Mar-14 | 4,497.3 | 4,416.6 | 1.8% |
| Labor force (1,000)-City | Mar-14 | 1,269.5 | 1,264.7 | 0.4% |
| Labor force (1,000)-MSA | Mar-14 | 4,896.0 | 4,867.6 | 0.6% |
| Unemployment rate-City | Mar-14 | 9.0 | 10.2 | -1.2 |
| Unemployment rate-MSA | Mar-14 | 8.1 | 9.3 | -1.1 |
| Labor force participation rate-statewide | Mar-14 | 65.4 | 65.7 | -0.3 |
| Total private payroll jobs (1,000)-City | Mar-14 | 1,162.5 | 1,154.9 | 0.7% |
| <i>Natural Resources & Mining</i> | Mar-14 | 0.2 | 0.2 | 0.9% |
| <i>Construction</i> | Mar-14 | 25.1 | 24.9 | 0.8% |
| <i>Manufacturing</i> | Mar-14 | 63.3 | 64.8 | -2.2% |
| <i>Wholesale trade</i> | Mar-14 | 46.0 | 45.8 | 0.5% |
| <i>Retail Trade</i> | Mar-14 | 94.4 | 94.5 | -0.1% |
| <i>Transportation, Warehousing, & Utilities</i> | Mar-14 | 71.3 | 69.9 | 2.0% |
| <i>Information</i> | Mar-14 | 32.9 | 32.7 | 0.6% |
| <i>Financial Activities</i> | Mar-14 | 125.6 | 127.8 | -1.7% |
| <i>Professional & Business Services</i> | Mar-14 | 272.2 | 268.6 | 1.4% |
| <i>Educational & Health Services</i> | Mar-14 | 239.0 | 232.8 | 2.7% |
| <i>Leisure & Hospitality</i> | Mar-14 | 125.7 | 126.7 | -0.8% |
| <i>Other Services</i> | Mar-14 | 66.7 | 66.2 | 0.7% |
| <i>Government</i> | Mar-14 | 178.3 | 178.3 | 0.0% |
| Unemployment insurance claims-Cook County | Feb-14 | 17,658 | 17,503 | 0.9% |
| New hires (1,000)-Midwest | Feb-14 | 1,024 | 874 | 17.2% |
| Online job postings-MSA | Q1-2014 | 272,720* | N/A* | N/A* |
| Leading Economic Index (2004=100)-N'I | Mar-14 | 100.9 | 94.7 | 6.2 |
| Consumer Sentiment Index-N'I | Apr-14 | 84.1 | 76.4 | 7.7 |
| Consumer Confidence (1985=100)-N'I | Apr-14 | 82.3 | 69.0 | 13.3 |
| Architecture Billings Index-N'I | Mar-14 | 48.8 | 52.0 | -3.2 |
| Producer Price Index (1982=100, seas. adjusted)-N'I | Mar-14 | 199.4 | 196.0 | 3.4 |
| New automobile sales (millions, seas. adjusted)-N'I | Mar-14 | 5.4 | 5.4 | -0.6% |
| New truck sales (millions, seas. adjusted)-N'I | Mar-14 | 7.4 | 6.7 | 11.3% |
| Freight Transportation Services Index (2000=100)-N'I | Feb-14 | 115.2 | 113.2 | 2.0 |
| Midwest Economy Index-Midwest | Mar-14 | -0.02 | 0.27 | -0.29 |
| Exports (\$B)-State of Illinois | Feb-14 YTD | 10.8 | 9.9 | 10.0% |
| GRP (est., 2014 \$B)-MSA | Q1-2014 | 558.7 | 546.9 | 2.2% |

EMPLOYMENT

BUSINESS ACTIVITY

Green = Improving; Red = Worsening

(cont.)



Chicago by the Numbers Revised 5/5/2014

| | Indicator | Date | Month/Quarter | | |
|-----------------------------|--|---------|---------------|--------------|--------------|
| | | | Most Recent | Year Earlier | Yr-On-Yr Chg |
| BUSINESS ACTIVITY | Chicago Business Barometer (seas. adjusted)-MSA | Apr-14 | 63.0 | 49.0 | 14.0 |
| | Consumer Price Index (CPI-U; 1982-84=100)-CMSA | Mar-14 | 228.8 | 224.4 | 4.4 |
| | Air cargo tonnage-O'Hare + Midway Airports | Mar-14 | 135,996 | 134,083 | 1.4% |
| | Venture capital rounds-MSA | Q1 2014 | 11.0 | 11.0 | 0.0% |
| | Venture capital investment (\$M)-MSA | Q1 2014 | 131.3 | 34.8 | 276.9% |
| | Major business expansions-City | Q1 2014 | 44 | 28 | 51.7% |
| | Major business expansions-MSA | Q1 2014 | 89 | 80 | 11.3% |
| | Digital startups launched-MSA | Q1 2014 | 42 | 22 | 90.9% |
| | Digital startup funding (\$M)-MSA | Q1 2014 | 157 | 61 | 157.4% |
| | Active manufacturing licenses-City | Apr-14 | 959 | 982 | -2.3% |
| REAL ESTATE | Population (millions)-City | Jul-12 | 2.715 | 2.705 | 0.4% |
| | Population (millions)-MSA | Jul-13 | 9.537 | 9.514 | 0.2% |
| | Cost of Living Index-City | 2013 | 115.3 | 117.1 | -1.8 |
| | Case Shiller Home Price Index-MSA | Feb-14 | 122.6 | 110.7 | 11.9 |
| | New private residential building permits-City | Mar-14 | 47 | 48 | -2.1% |
| | New private residential building permits-MSA | Mar-14 | 1,455 | 1,029 | 41.4% |
| | Housing starts (1,000)-Midwest | Mar-14 | 144 | 140 | 2.9% |
| | Home sales-City | Mar-14 | 1,819 | 1,945 | -6.5% |
| | Median home sale price (\$)-City | Mar-14 | 237,000 | 187,000 | 26.7% |
| | Office vacancy rate-downtown | Q1 2014 | 13.7 | 13.9 | -0.2 |
| Office vacancy rate-suburbs | Q1 2014 | 19.8 | 20.8 | -1.0 | |
| TOURISM | Annual visitors (millions)-City | 2012 | 46.37 | 43.59 | 6.4% |
| | Hotel occupancy rate-City | Mar-14 | 68.2 | 73.3 | -5.1 |
| | Hotel average daily rate (\$)-City | Mar-14 | 158.35 | 168.04 | -5.8% |
| | Air passengers (millions)-O'Hare + Midway Airports | Mar-14 | 7.53 | 7.19 | 4.7% |

Green = Improving; Red = Worsening

Footnotes and Sourcing

*Data provider transitioned to an improved technology in Q3 2013 that resulted in a substantial increase in job postings; therefore, postings prior to Q3 2013 should not be compared to postings after Q3 2013.

Data is current as of 05/03/2014; preliminary estimates are subject to revision. Data is not adjusted for seasonality unless otherwise noted. The Chicago MSA (metropolitan statistical area) consists of a 14-county, tri-state region: Cook, DeKalb, DuPage, Grundy, Kane, Kendall, Lake, McHenry, and Will counties in Illinois; Jasper, Lake, Newton, and Porter counties in Indiana; and Kenosha County in Wisconsin. Midwest data reflects totals for Illinois, Indiana, Iowa, Kansas, Michigan, Minnesota, Missouri, Nebraska, North Dakota, Ohio, South Dakota, and Wisconsin. The Freight Transportation Services Index is a measure of the month-to-month changes in the output of for-hire freight transportation service providers including trucking, rail, inland waterway vessels, pipeline, and air freighters; the index does not include international or coastal movements, private trucking, courier services, or the U.S. Postal Service. State of Illinois exports are measured by the U.S. Census HS origin of production state-based series. Venture capital refers to cash investments by corporations and individuals into companies that have received at least one round of venture funding. **Sources (in order of appearance):** Illinois Department of Employment Security, U.S. Bureau of Labor Statistics, Burning Glass data generously provided by the Chicago-Cook Workforce Partnership, The Conference Board, Thomson Reuters/University of Michigan, American Institute of Architects, U.S. Bureau of Economic Analysis, U.S. Bureau of Transportation Statistics, Federal Reserve Bank of Chicago, USA Trade Online, Moody's Analytics, Institute for Supply Management, Chicago Department of Aviation, DJX VentureSource, World Business Chicago, Built in Chicago, City of Chicago, U.S. Census Bureau, Council for Community and Economic Research, S&P Dow Jones, Illinois Association of Realtors, CBRE, Smith Travel Research data generously provided by Choose Chicago